



CHRIS PAYNE: a retrospective - 6 Jan - 4 Feb

[Back to previous page](#)

In her 70th year, Chris now lives in Narberth.

She retired from teaching ten years ago to concentrate on painting and moved to Wales, where she found the environmental forms inspirational as a frame for her ideas, memories and comments on human life and her experience of it.

Chris paints trees and rocks of Pembrokeshire and Carmarthenshire in oils, in bright colours with the added edge of exaggerated forms suggesting figures or spirits. Chris has created an unusual style, bordering on abstract by not trying to be too realistic and yet they are illustrative, and would be wonderful studies for fairy stories.

Anthropopathism is in the eye of the beholder, but most viewers will find themselves recognising faces and animals in the textures and forms of these detailed paintings!

The exhibition is open 10am-5pm daily.



erosion | andromeda, lawrenny



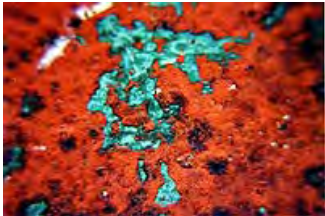
the preacher on the shore, st govans | after the flood 1



the spectators, wisemans bridge | the cave, lawrenny



tree roots 1, Ilangadog
On The Stairs, GALE LEWIS [below]



[Back to previous page](#)

[^ top](#)